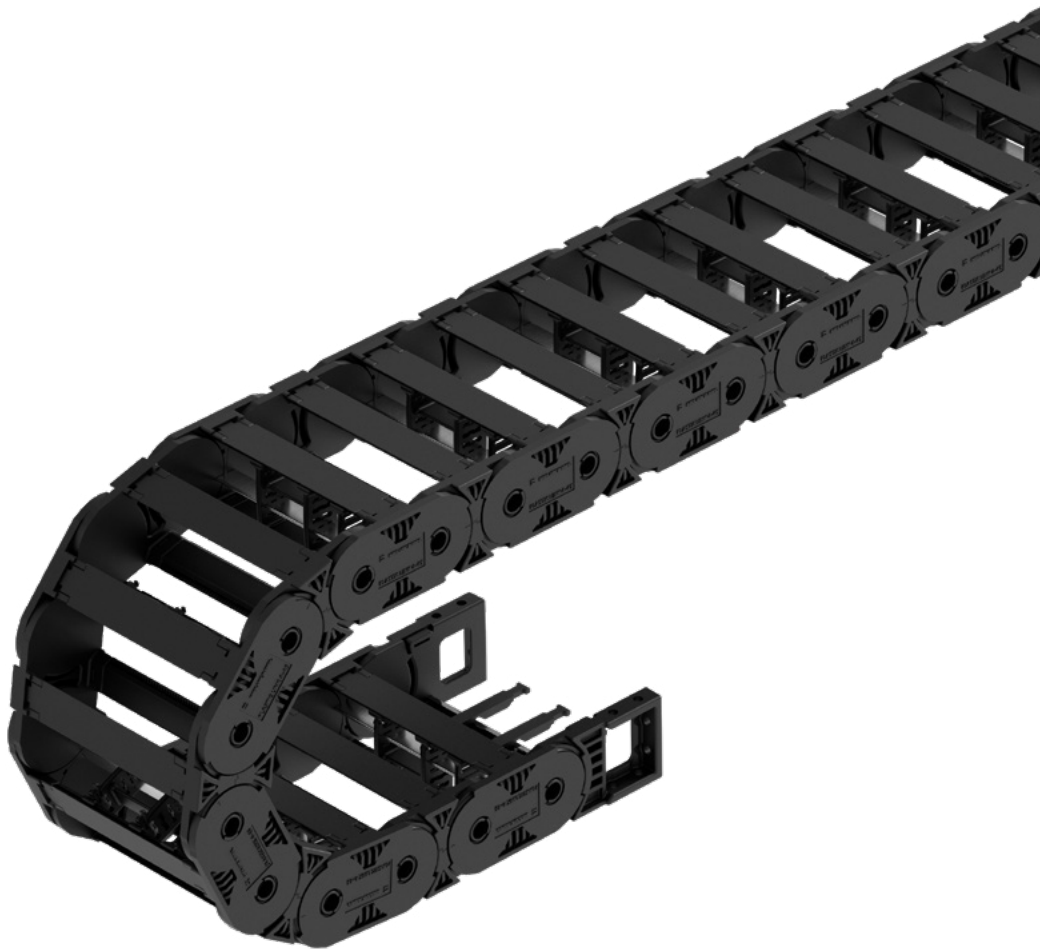


The durable all-rounder for reliable energy transmission

HELUCHAIN[®] PLASTIC LINK 4-45

Ed. 1 // EN



HELUCHAIN® PLASTIC LINK 4-45

The durable all-rounder for reliable energy transmission

HELUKABEL is introducing an innovative and extremely versatile drag chain onto the market: the HELUCHAIN® PLASTIC LINK 4-45. This high-performance chain has an inner height of 45 millimetres and an inner width of up to 400 millimetres. It comes

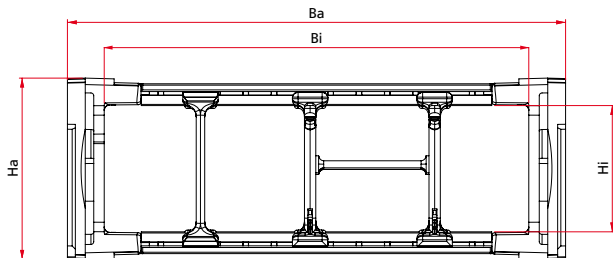
equipped with a sturdy, four-fold stay system and exhibits impressive lateral stability, which makes it ideal for use in mechanical engineering, intralogistics, material handling, indoor crane operations, and in packaging and automotive engineering.

The advantages of the HELUCHAIN® PLASTIC LINK 4-45:

- designed with optimal abrasion and wear-resistance for greater durability
- high lateral stability via a combination of snap-in connectors and tongue and groove joint
- optimised stops and bending radii allow for impressively smooth and quiet operation
- adjustable initial tension and high directional stability due to inner and outer links
- easy installation and removal of frame stays
- secure fit of the double-sided gripping inner separations while opening the chain
- modular inner separations with openable, double-sided gripping partition bars and five-way height- and width-adjustable shelves
- wear-resistant sliding surfaces for gliding applications
- Strain relief via cable clamps or tension relievers

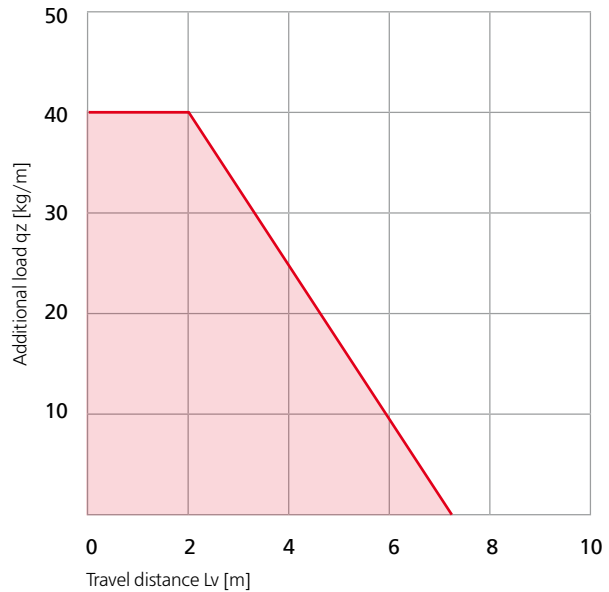


Cross section HELUCAIN® PLASTIC LINK 4-45



- Inner height H_i : 45 mm
- Outer height H_a : 64 mm
- Inner width B_i : 50 mm bis 400 mm
- Outer width B_a : $B_i + 26$ mm
- Pitch t : 65 mm
- Bending radii R : 75 mm, 95 mm, 115 mm, 140 mm, 175 mm, 200 mm, 240 mm, 300 mm, 340 mm
- Travel distance L_v : up to 200 m
while adhering to our design guidelines
- Temperature range: -20°C to $+90^{\circ}\text{C}$

Load diagram HELUCAIN® PLASTIC LINK 4-45 for self-supporting applications



**(Channeling
POWER)** 