

Wind turbine electrical components

FROM THE TURBINE TO THE GRID

Ed. 2 // EN



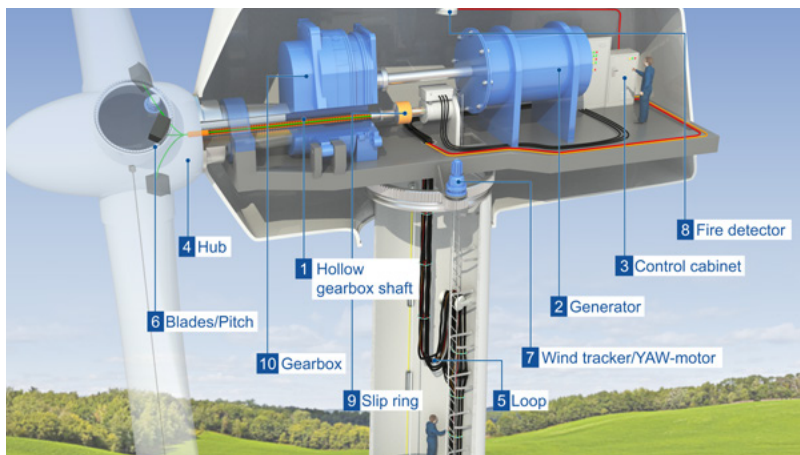
**(Channeling
POWER)** 

Wind Turbines: Functional Overview

1 NACELLE

Oil-resistant cables for high temperatures

- highly flexible control and bus cables for heavy mechanical loads in rough environments of rotating components
- hybrid cable solutions with increased current carrying capacity for the supply and control of the pitch drive (rotor blade adjustment), from the slip ring through the hollow gearbox shaft to the hub
- torsion-resistant, fire detection cable
- copper and fibre optic data and communication cable



2 TOWER BASE

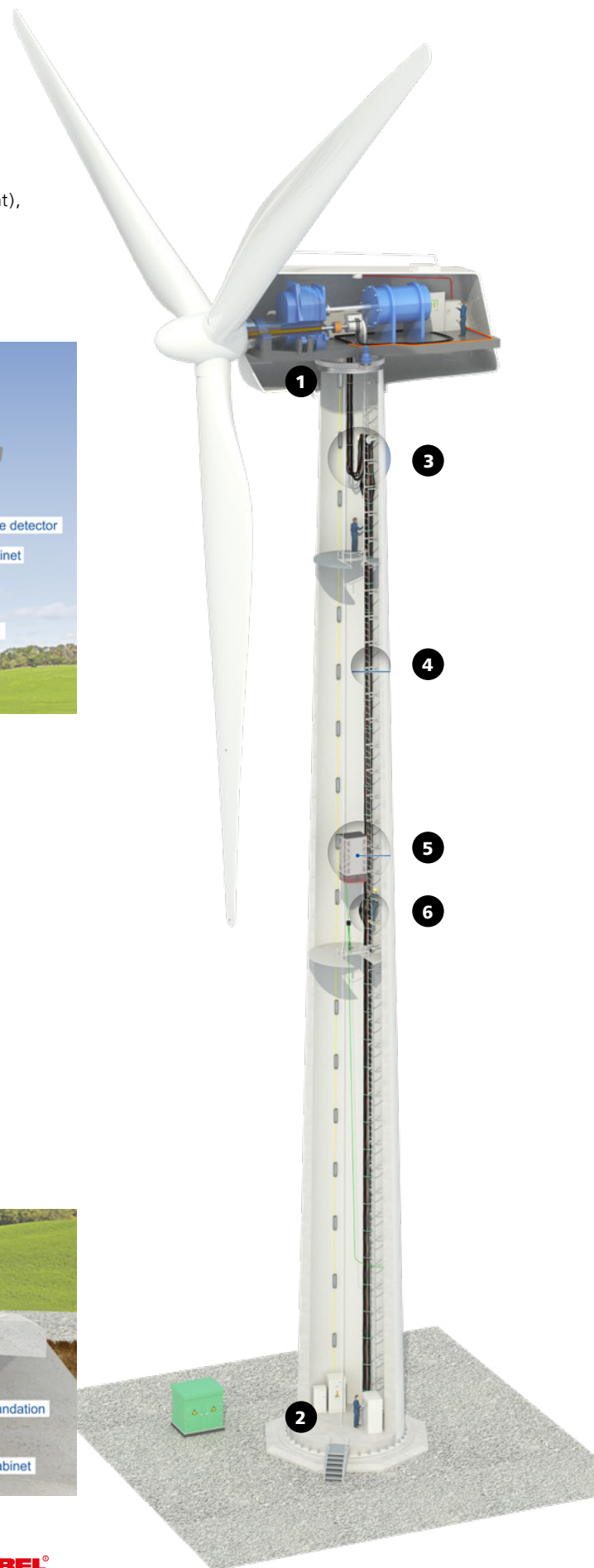
Multi-wire and finely stranded power cables

- aluminium and copper cables
- 0.6 / 1 kV to 35 kV for direct burial
- conduit systems

Connection to the grid: Medium-voltage cables

- aluminium and copper cables
- all voltage levels, cross sections up to 1000 mm²
- length and laterally watertight

Connection & indoor termination sleeves



3 LOOP

Torsion-resistant cables of the WK series

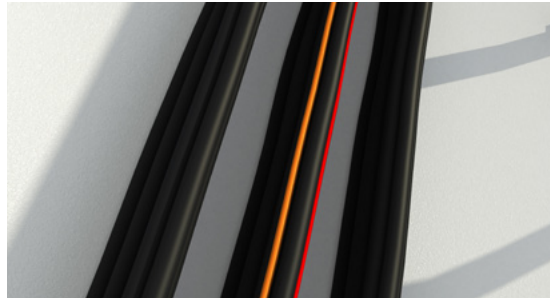
- tested for more than 15,000 torsion cycles
- for climate zones from -40°C to +145°C
- oil, ozone and UV-resistant
- multiple approvals available
- cable grips



4 TOWER

Aluminium & copper cables

- multi-wire and finely stranded versions, specific alloys
- 0.6/1 kV – 35 kV
- VDE, CE, UL/CSA listed
- fastening systems from leading manufacturers



5 LIFT

WK Lift Cables

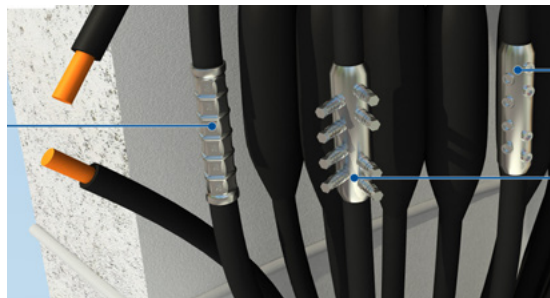
- supply cables for lifts
- as carriage version for mid-level feed-in, optional as flat cables
- high bending and abrasion resistance
- CE & UL/CSA approvals



6 CONNECTOR

Extensive connectivity solutions

- CU/CU – AL/AL – AL/CU
- available as crimp and screw fitting version
- crimp tools: electro-hydraulic, hand-held press tools



Contact

Our product experts are available for your questions and custom solutions.



Uwe Schenk

Global Segment Manager
eMobility & Renewable Energy
Phone: +49 7150-9209-624
Mobile: +49 171-6068424
uwe.schenk@helukabel.de



Joachim Koch

Teamleader eMobility & Renew.
Energy/Dep. Head of Special Cables
Phone: +49 7150 9209 135
Mobile: +49 173 61 62 995
joachim.koch@helukabel.de

**(Channeling
POWER)** 